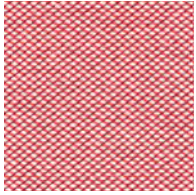


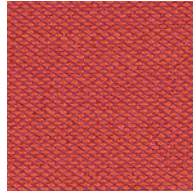
Steelcut Trio 3

kvadrat

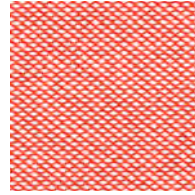
Steelcut Trio 3



636



553



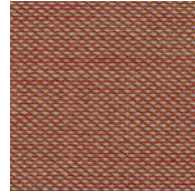
526



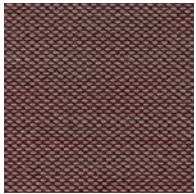
686



666



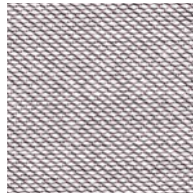
515



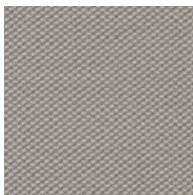
645



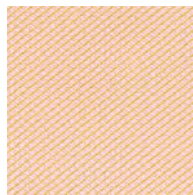
226



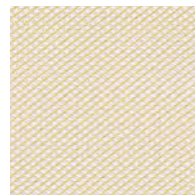
616



205



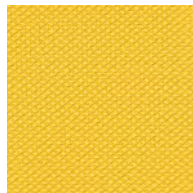
506



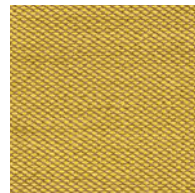
236



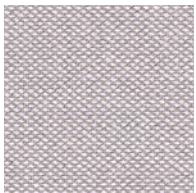
213



446



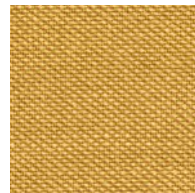
453



246

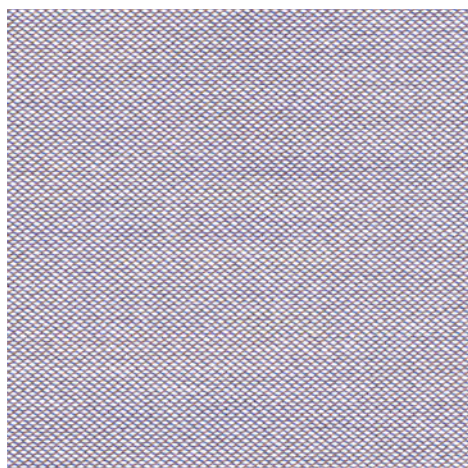


253



466

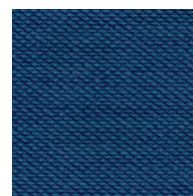
Steelcut Trio 3



806



883



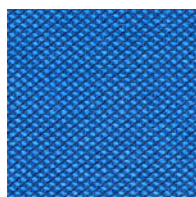
865



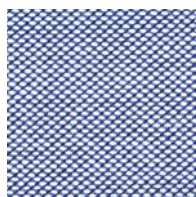
796



756



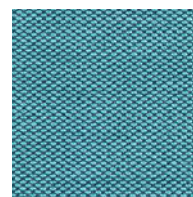
746



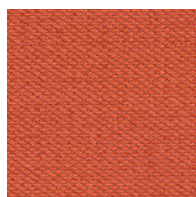
716



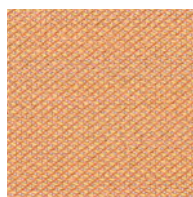
776



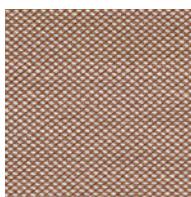
983



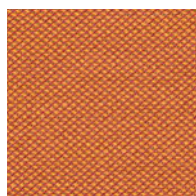
533



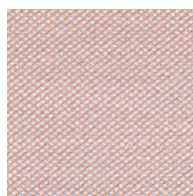
436



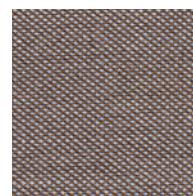
476



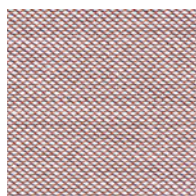
576



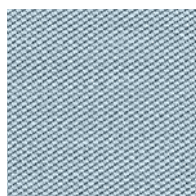
426



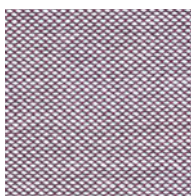
376



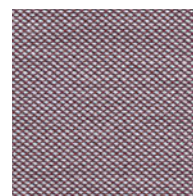
416



713

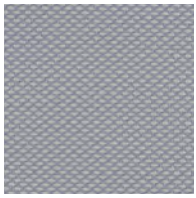


336

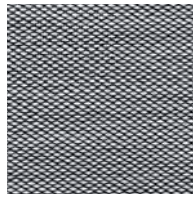


276

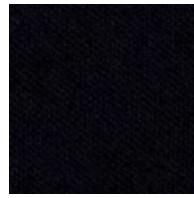
Steelcut Trio 3



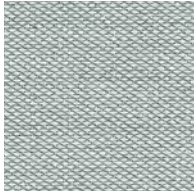
105



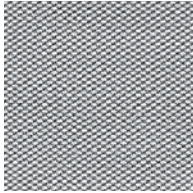
124



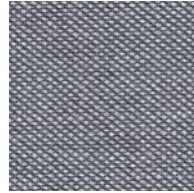
195



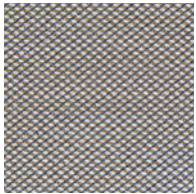
113



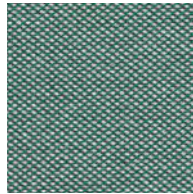
133



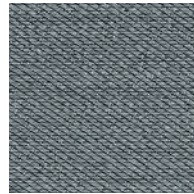
176



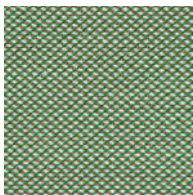
266



966



153



946



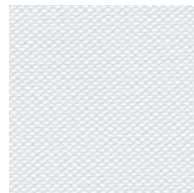
953



283



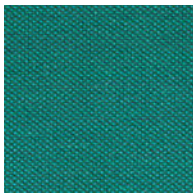
996



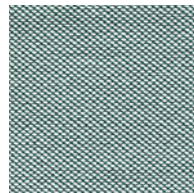
906



383



976



916

Steelcut Trio 3

Designed by Frans Dijkmeijer and Giulio Ridolfo

DK

Anvendelse Kontorer, hoteller, institutioner, private indretninger. Stor slidstyrke.
Beskrivelse 90% ny uld, kamgarn, 10% nylon. Bredde ca. 140 cm. Vægt ca. 770 g/lbm. Garnfarvet. Nuanceforskel kan forekomme.
Ægkant ↓
Slidstyrke: Ca. 100.000 slidbevægelser efter Martindale metoden EN ISO 12947. **Lysægthed** (ISO) 5-7. **Pilling** (EN ISO) 4. **Gnidægthed** (ISO) tør 4-5, våd 3-5. **Lydsorption** (EN ISO 354) 0.70/Class C (fladt), 0.95/Class A (foldet). **Airflow** 910 Pa s/m. **Flammesikring:** AS/NZS 1530.3. AS/NZS 3837 Class 2. BS 5852 Crib 5 med flammesikring. BS 5852 ignition source 3. BS 5852 part 1. EN 1021-1/2. GB 50222 B1 med flammesikring. IMO FTP Code 2010:Part 8. NF D 60 013. NFPA 260. SN 198 898 5.3 med flammesikring. UNI 9175 11M. US Cal. Bull. 117-2013. ÖNORM B1 / Q1. (Kopi af testrapport kan rekvireres).
Vedligeholdelse Se ISO symboler.

UK/US

Application Offices, hotels, institutions, domestic use. Great durability.
Description 90% new wool, worsted, 10% nylon. Width app. 55 inches (140 cm). Weight app. 24.7 oz/ly (770 g/lin.m). Yarn dyed. Colour differences may occur.
Selvedge/Direction ↓
Abrasion: App. 100,000 rubs acc. to the Martindale method EN ISO 12947. **Lightfastness** (ISO) 5-7. **Pilling** (EN ISO) 4. **Fastness to rubbing** (ISO) dry 4-5, wet 3-5. **Sound absorption** (EN ISO 354) 0.70/Class C (flat), 0.95/Class A (waved). **Airflow** 910 Pa s/m. **Flame resistance:** AS/NZS 1530.3. AS/NZS 3837 Class 2. BS 5852 Crib 5 with treatment. BS 5852 ignition source 3. BS 5852 part 1. EN 1021-1/2. GB 50222 B1 with treatment. IMO FTP Code 2010:Part 8. NF D 60 013. NFPA 260. SN 198 898 5.3 with treatment. UNI 9175 11M. US Cal. Bull. 117-2013. ÖNORM B1 / Q1. (Copy of test report available).
Care Please see the ISO symbols.

DE

Anwendungsbereich Büros, Hotels, Objectbereich, privaten Wohnbereich, Hohe Strapazierfähigkeit.
Beschreibung 90% Schurwolle, Kammgarn. 10% Nylon. Breite ca. 140 cm. Gewicht ca. 770 g/m. Garngefärbt. Farbunterschiede können vorkommen.
Webkant ↓
Scheuerfestigkeit: Ca. 100.000 Scheuerhübe nach der Martindale Methode EN ISO 12947. **Lichtechtheit** (ISO) 5-7. **Pilling** (EN ISO) 4. **Reibechtheit** (ISO) trocken 4-5, nass 3-5. **Schallabsorption** (EN ISO 354) 0.70/Class C (glatt), 0.95/Class A (gefaltet). **Airflow** 910 Pa s/m. **Flammenschutz:** AS/NZS 1530.3. AS/NZS 3837 Class 2. BS 5852 Crib 5 mit Ausrüstung. BS 5852 ignition source 3. BS 5852 part 1. EN 1021-1/2. GB 50222 B1 mit Ausrüstung. IMO FTP Code 2010:Part 8. NF D 60 013. NFPA 260. SN 198 898 5.3 mit Ausrüstung. UNI 9175 11M. US Cal. Bull. 117-2013. ÖNORM B1 / Q1. (Testbericht verfügbar).
Pflege Siehe ISO Pflegesymbole.

NL

Toepassing Kantoren, hotels, instellingen, de privéfeer. Uitstekende slijtvastheid.
Omschrijving 90% scheerwol, kamgaren, 10% nylon. Breedte ca. 140 cm. Gewicht ca. 770 gr/str. m. Garegeverfd. Kleurverschillen kunnen optreden.
Zelfkant ↓
Slijtvastheid: Ca. 100.000 toeren Martindale EN ISO 12947. **Lichtechtheid** (ISO) 5-7. **Pilling** (EN ISO) 4. **Wrijftechtheid** (ISO) droge 4-5, natte 3-5. **Geluidsabsorptie** (EN ISO 354) 0.70/Class C (vlak), 0.95/Class A (geplooid). **Airflow** 910 Pa s/m. **Brandwerendheid:** AS/NZS 1530.3. AS/NZS 3837 Class 2. BS 5852 Crib 5 met behandeling. BS 5852 ignition source 3. BS 5852 part 1. EN 1021-1/2. GB 50222 B1 met behandeling. IMO FTP Code 2010:Part 8. NF D 60 013. NFPA 260. SN 198 898 5.3 met behandeling. UNI 9175 11M. US Cal. Bull. 117-2013. ÖNORM B1 / Q1. (Op aanvraag sturen wij u graag een kopie van het testrapport toe).
Onderhoud Zie de ISO symbolen.

FR

Domaine d'utilisation Tissu d'ameublement pour aménagement privé et public. Grande résistance.
Description 90% laine vierge, peignée, 10% nylon. Largeur env. 140 cm. Poids env. 770 g/m lg. Teinture sur fil. Ecart des coloris possibles.
Lisière ↓
Résistance à l'abrasion: Env. 100.000 révolutions selon le procédé Martindale EN ISO 12947. **Résistance à la lumière** (ISO) 5-7. **Boulochage** (EN ISO) 4. **Résistance au frottement** (ISO) sec 4-5, mouillé 3-5. **Absorption acoustique** (EN ISO 354) 0.70/Class C (à plat), 0.95/Class A (plié). **Airflow** 910 Pa s/m. **Normes au feu:** AS/NZS 1530.3. AS/NZS 3837 Class 2. BS 5852 Crib 5 avec traitement. BS 5852 ignition source 3. BS 5852 part 1. EN 1021-1/2. GB 50222 B1 avec traitement. IMO FTP Code 2010:Part 8. NF D 60 013. NFPA 260. SN 198 898 5.3 avec traitement. UNI 9175 11M. US Cal. Bull. 117-2013. ÖNORM B1 / Q1. (La copie du compte rendu des tests est disponible sur demande).
Entretien Voir les symboles ISO.

IT

Destinazione d'uso Rivestimenti per imbottiti, casa e contract. Alta resistenza all'abrasione.
Caratteristiche 90% lana vergine, pettinata, 10% nylon. Altezza circa 140 cm. Peso circa 770 gr/mtl. Tinto in filo. Possibili differenze per colore.
Cimosa ↓
Resistenza all'abrasione: circa 100.000 cicli/ metodo Martindale EN ISO 12947. **Resistenza alla luce** (ISO) 5-7. **Pilling** (EN ISO) 4. **Resistenza allo sfregamento** (ISO) condizione a secco 4-5, condizione umido 3-5. **Assorbimento acustico** (EN ISO 354) 0.70/Class C (tenda a pannello (tesa)), 0.95/Class A (tenda arricciata). **Airflow** 910 Pa s/m. **Ignifugazione:** AS/NZS 1530.3. AS/NZS 3837 Class 2. BS 5852 Crib 5 trattato ignifugo. BS 5852 ignition source 3. BS 5852 part 1. EN 1021-1/2. GB 50222 B1 trattato ignifugo. IMO FTP Code 2010:Part 8. NF D 60 013. NFPA 260. SN 198 898 5.3 trattato ignifugo. UNI 9175 11M. US Cal. Bull. 117-2013. ÖNORM B1 / Q1. (Disponibile copia del test).
Manutenzione Per favore seguire simboli ISO.

ES

Aplicación Adecuado para el uso en oficinas, hoteles, instituciones y hogares. Gran resistencia al desgaste.
Decripción 90% lana virgen, peinada, 10% nilón. Anchura aprox. 140 cm. Peso aprox. 770 gr/ml. Hilo teñido. Posibles variaciones de color.
Filo ↓
Resistencia al desgaste: Aprox. 100.000 ciclos según el método Martindale EN ISO 12947. **Resistencia a la luz** (ISO) 5-7. **Relleño** (EN ISO) 4. **Solidez al frotamiento** (ISO) seco 4-5, mojado 3-5. **Absorción acústica** (EN ISO 354) 0.70/Class C (estor), 0.95/Class A (cortina). **Airflow** 910 Pa s/m. **Resistencia al fuego:** AS/NZS 1530.3. AS/NZS 3837 Class 2. BS 5852 Crib 5 con tratamiento. BS 5852 ignition source 3. BS 5852 part 1. EN 1021-1/2. GB 50222 B1 con tratamiento. IMO FTP Code 2010:Part 8. NF D 60 013. NFPA 260. SN 198 898 5.3 con tratamiento. UNI 9175 11M. US Cal. Bull. 117-2013. ÖNORM B1 / Q1. (Copia del informe de ensayos disponible).
Limpieza Consulte los símbolos ISO.

JP

用途 オフィス、ホテル、各種施設、住宅インテリア。耐耗性大。
詳細 90% ニューウール。ウーステッド、10% ナイロン。幅:140cm。重量:1mあたり約770gr。糸染め。明色の場合、異質繊維が混在する場合があります。色彩ニューアンスに多少の違いが生じる可能性あり。
耳、ふち ↓
テスト
磨耗: マーチンデール法により摩擦運動約100,000回。EN ISO 12947. **色褪せ保証:** (ISO) 5-7. **ピリング** (EN ISO) 4. **摩擦保証:** (ISO) 乾燥状態 4-5、濡れた状態 3-5. **吸音率** (EN ISO 354) 0.70/Class C (バネル状)、0.95/Class A (ドレープ状). **気流:** 910 Pa s/m. **耐炎性:** AS/NZS 1530.3. AS/NZS 3837 Class 2. **特殊耐炎処理**を行うことにより、BS 5852 Crib 5 に到達可能。BS 5852 ignition source 3. BS 5852 part 1. EN 1021-1/2. **特殊耐炎処理**を行うことにより、GB 50222 B1 に到達可能。IMO FTP Code 2010:Part 8. NF D 60 013. NFPA 260. **特殊耐炎処理**を行うことにより、SN 198 898 5.3 に到達可能。UNI 9175 11M. US Cal. Bull. 117-2013. ÖNORM B1 / Q1. (テストレポートコピー入手可能。)
手入れ
ISO シンボル参照。

CN

适用范围 办公室, 宾馆酒店, 公共设施, 居家使用。耐耗性大。
成分 90%新羊毛, 精纺, 10%尼龙。幅宽约55英寸(140 cm)。重量770克/延米, 纱染色面料。颜色可能稍有色差。
织边方向 ↓
马丁代尔法约100,000转。EN ISO 12947. **光照色牢度** (ISO) 5-7. **起毛起球** (EN ISO) 4. **磨擦色牢度** (ISO) 干燥 4-5, 湿 3-5. **吸声系数** (EN ISO 354) 0.70/Class C (隔帘布), 0.95/Class A (一般窗帘使用). **气流阻力** 910 Pa s/m. **阻燃性:** AS/NZS 1530.3, AS/NZS 3837 Class 2. **特别耐火处理**时BS 5852 Crib 5 可以满足。BS 5852 ignition source 3, BS 5852 part 1, EN 1021-1/2. **特别耐火处理**时GB 50222 B1 可以满足。IMO FTP Code 2010:Part 8, NF D 60 013, NFPA 260. **特别耐火处理**时SN 198 898 5.3 可以满足。UNI 9175 11M, US Cal. Bull. 117-2013, ÖNORM B1 / Q1. (可提供测试报告副本).
维护 请参照ISO标志。



10 year warranty



Quality and environmental system accreditation according to ISO 9001 and ISO 14001.

*ACT® Registered Certification Marks

Encouraging the use of sustainable fibres. Durable and high quality. Hazardous substances restricted.

Contact and further information www.kvadrat.dk

US contact info: 1-800-620-9309