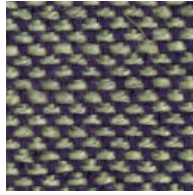


SUNNIVA 3

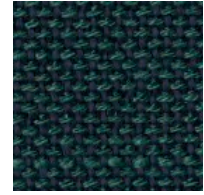
KVADRAT / RAF SIMONS



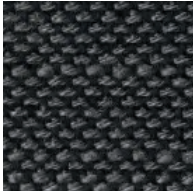
193



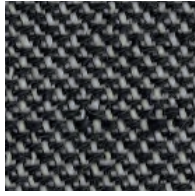
952



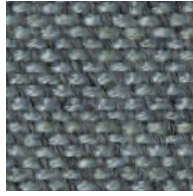
863



173



163



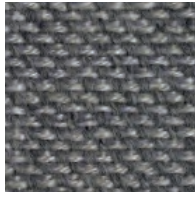
152



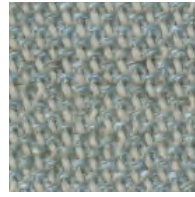
953



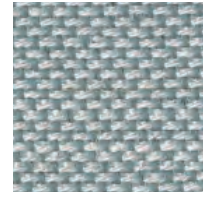
183



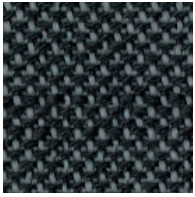
242



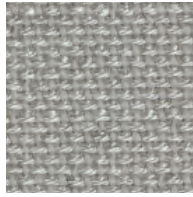
132



723



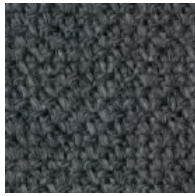
763



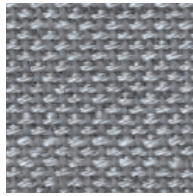
223



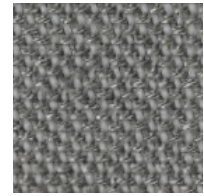
113



1079

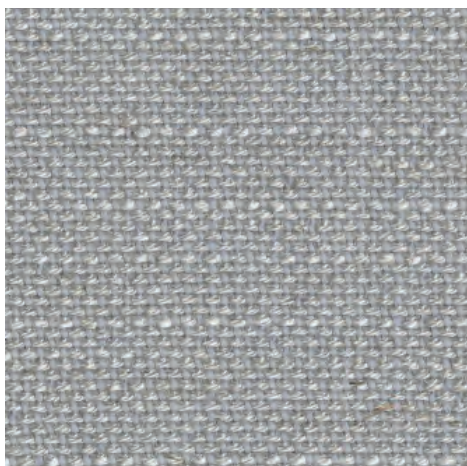


133



153

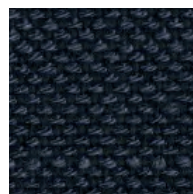
SUNNIVA 3



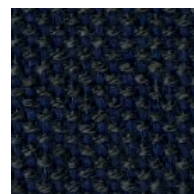
713



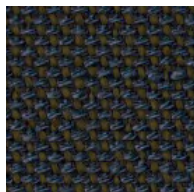
752



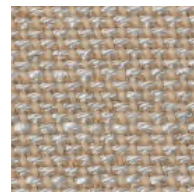
783



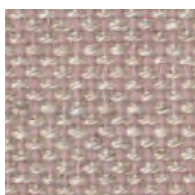
192



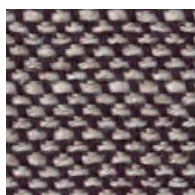
773



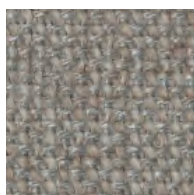
423



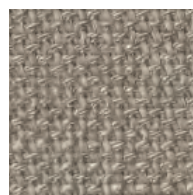
236



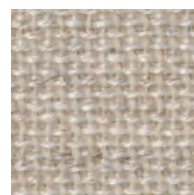
352



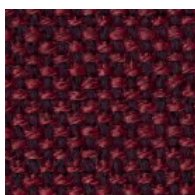
717



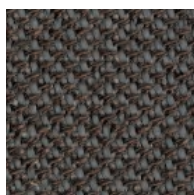
233



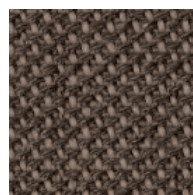
811



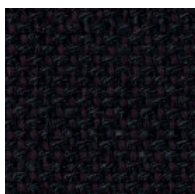
662



353



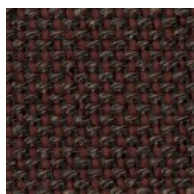
253



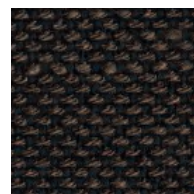
683



373



363



383

SUNNIVA 3
RAF SIMONS AND FANNY ARONSEN

DK

Anvendelse

Kontorer, hoteller, institutioner, private indretninger. Stor slidstyrke.

Beskrivelse

58% ny uld. 25% viskose. 8% hør. 5% nylon. 4% polyester. Bredde ca. 140 cm. Vægt ca. 590 g/lbm. Garnfarvet. Nuanceforskel kan forekomme.

Ægkant ↓

Slidstyrke: Ca. 50.000 slidbevægelser efter Martindale metoden EN ISO 12947.

Lysægthed (ISO) 4-7. Pilling (EN ISO) 3.

Gnidægthed (ISO) tør 4-5, våd 3-5.

Flammesikring: AS/NZS 3837 Class 2. BS 5852 Crib 5 med flammesikring. BS 5852 part 1 ignition source 0. EN 1021-1/2. IMO FTP Code 2010:Part 8 med flammesikring. NFPA 260. US Cal. Bull. 117-2013. (Kopi af testrapport kan rekvireres).

Vedligeholdelse

Se ISO symboler.

UK/US

Application

Offices, hotels, institutions, domestic use. Great durability.

Description

58% new wool. 25% viscose. 8% linen. 5% nylon. 4% polyester. Width app. 55 inches (140 cm). Weight app. 18.9 oz/ly (590 g/lin.m). Yarn dyed. Colour differences may occur.

Selvedge/Direction ↓

Abrasion: App. 50,000 rubs acc. to the Martindale method EN ISO 12947.

Lightfastness (ISO) 4-7. Pilling (EN ISO) 3. Fastness to rubbing (ISO) dry 4-5,

wet 3-5. Flame resistance: AS/NZS 3837 Class 2. BS 5852 Crib 5 with treatment. BS 5852 part 1 ignition source 0. EN 1021-1/2.

IMO FTP Code 2010:Part 8 with treatment. NFPA 260. US Cal. Bull. 117-2013. (Copy of test report available).

Care

Please see the ISO symbols.

DE

Anwendungsbereich

Büros, Hotels, Objektbereich, privater Wohnbereich. Hohe Strapazierfähigkeit.

Beschreibung

58% Schurwolle. 25% Viskose. 8% Leinen. 5% Nylon. 4% Polyester. Breite ca. 140 cm. Gewicht ca. 590 g/m. Garngefärbt. Farbunterschiede können vorkommen.

Webkant ↓

Scheuerfestigkeit: Ca. 50.000 Scheuerhübe nach der Martindale Methode EN ISO 12947. **Lichtechtheit (ISO) 4-7.**

Pilling (EN ISO) 3. Reibechtheit (ISO) trocken 4-5, nass 3-5. Flammenschutz:

AS/NZS 3837 Class 2. BS 5852 Crib 5 mit Ausrüstung. BS 5852 part 1 ignition source 0. EN 1021-1/2. IMO FTP Code 2010:Part 8 mit FR Ausrüstung. NFPA 260. US Cal. Bull. 117-2013. (Testbericht verfügbar).

Pflege

Siehe ISO Pflegesymbole.

NL

Toepassing

Kantoren, hotels, instellingen, de privésfeer. Uitstekende slijtvastheid.

Omschrijving

58% scheerwol. 25% viscose. 8% linnen. 5% nylon. 4% polyester. Breedte ca. 140 cm. Gewicht ca. 590 gr/str. m. Garengeverfd. Kleurverschillen kunnen optreden.

Zelfkant ↓

Slijtvastheid: Ca. 50.000 toeren

Martindale EN ISO 12947. **Lichtechtheid (ISO) 4-7. Pilling (EN ISO) 3.**

Wrijftechtheid (ISO) droog 4-5, nat 3-5.

Brandwerendheid: AS/NZS 3837 Class 2. BS 5852 Crib 5 met FR behandeling. BS 5852 part 1 ignition source 0. EN 1021-1/2.

IMO FTP Code 2010:Part 8 met behandeling. NFPA 260. US Cal. Bull. 117-2013. (Op aanvraag sturen wij u graag een kopie van het testrapport toe).

Onderhoud

Zie de ISO symbolen.

FR

Domaine d'utilisation

Tissu d'ameublement pour aménagement privé et public. Grande résistance.

Description

58% laine vierge. 25% viscose. 8% lin. 5% nylon. 4% polyester. Largeur env. 140 cm. Poids env. 590 g/m lg. Teinture au fil. Ecart des coloris possibles.

Lisière ↓

Résistance à l'abrasion: Env. 50.000 révolutions selon le procédé Martindale EN ISO 12947. **Résistance à la lumière (ISO) 4-7. Boulochage (EN ISO) 3.**

Résistance au frottement (ISO) sec 4-5, mouillé 3-5. Normes au feu: AS/NZS 3837 Class 2. BS 5852 Crib 5 avec traitement. BS 5852 part 1 ignition source 0. EN 1021-1/2. IMO FTP Code 2010:Part 8 avec traitement. NFPA 260. US Cal. Bull. 117-2013. (La copie du compte rendu des tests est disponible sur demande).

Entretien
Voir les symboles ISO.

IT

Destinazione d'uso

Rivestimento per imbottiti casa e contract. Alta resistenza all'abrasione.

Caratteristiche

58% lana virgin. 25% viscosa. 8% lino. 5% nylon. 4% poliestere. Altezza circa 140 cm. Peso circa 590 gr/ml. Tinto in filo. Possibili differenze per colore.

Cimosa ↓

Abrasion: circa 50.000 cicli/metodo Martindale EN ISO 12947. **Resistenza alla luce (ISO) 4-7. Pilling (EN ISO) 3.**

Resistenza allo sfregamento (ISO) condizione a secco 4-5, condizione umido 3-5.

Ignifugazione: AS/NZS 3837 Class 2. BS 5852 Crib 5 trattato ignifugo. BS 5852 part 1 ignition source 0. EN 1021-1/2. IMO FTP Code 2010:Part 8 trattato ignifugo. NFPA 260. US Cal. Bull. 117-2013. (Disponibile copia del test).

Manutenzione

Per favore seguire simboli ISO.

ES

Aplicación

Oficinas, hoteles, instituciones, uso doméstico. Gran resistencia al desgaste.

Descripción

58% lana virgen. 25% viscosa. 8% lino. 5% nilón. 4% poliéster. Anchura aprox. 140 cm. Peso aprox. 590 gr/ml. Hilo teñido. Posibles variaciones de color.

Filo ↓

Resistencia al desgaste: Aprox. 50.000 ciclos según el método Martindale EN ISO 12947. **Resistencia a la luz (ISO) 4-7.**

Relleno (EN ISO) 3. Solidez al frotamiento (ISO) seco 4-5, mojado 3-5.

Resistencia al fuego: AS/NZS 3837 Class 2. BS 5852 Crib 5 con tratamiento. BS 5852 part 1 ignition source 0. EN 1021-1/2.

IMO FTP Code 2010:Part 8 con tratamiento. NFPA 260. US Cal. Bull. 117-2013. (Copia del informe de ensayos disponible).

Mantenimiento

Consulte los símbolos ISO.

JP

用途

オフィス、ホテル、各種施設、住宅など。耐磨耗性大。

詳細

58% ニューウール。25% ビスコース。8% リネン。5% ポリアミド。4% ポリエステル。幅：140 cm。重量：1mあたり約590g。糸染め。色彩に差が生じる可能性あり。

耳、ふち ↓

摩擦: マーチンデール法により摩擦運動約50,000回。EN ISO 2947. **色あせ保証 (ISO) 4-7. ピリング (EN ISO) 3. 摩擦保証 (ISO) ドライ4-5, ウェット3-5. 耐炎性:** AS/NZS 3837 Class 2. 特殊耐炎処理を行うことにより、BS 5852 Crib 5 に到達可能。BS 5852 part 1 ignition source 0. EN 1021-1/2. 特殊耐炎処理を行うことにより、IMO FTP Code 2010:Part 8 に到達可能。NFPA 260. US Cal. Bull. 117-2013. (テストレポートのコピー入手可能。)

手入れ
ISO シンボル参照。

CN

适用范围

办公室, 宾馆酒店, 公共设施, 居家使用。耐耗性大。

成分

58% 新羊毛。25% 粘胶纤维。8% 亚麻。5% 尼龙。4% 涤纶。幅宽约55英寸(140cm)。重量约590克/延米, 纱线染色面料。颜色可能稍有差别。

织边方向 ↓

马丁代尔法约50,000转。EN ISO 12947. **光照色牢度 (ISO) 4-7. 起毛起球 (EN ISO) 3. 摩擦色牢度 (ISO) 干燥4-5、湿3-5. 阻燃性:** AS/NZS 3837 Class 2. 特别耐火处理时BS 5852 Crib 5 可以满足。BS 5852 part 1 ignition source 0. EN 1021-1/2. 特别耐火处理时IMO FTP Code 2010:Part 8 可以满足。NFPA 260. US Cal. Bull. 117-2013. (可提供测试报告副本)。

维护
请参照ISO标志。



10 year warranty



Quality and environmental system accreditation according to ISO 9001 and ISO 14001.

*ACT® Registered Certification Marks

Contact and further information www.kvadrat.dk



US contact info: 1-800-620-9309

