

Divina 3

kvadrat

Divina 3



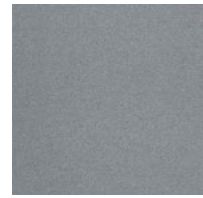
684



691



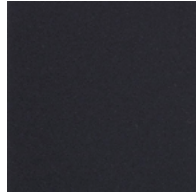
171



173



676



191



154



384



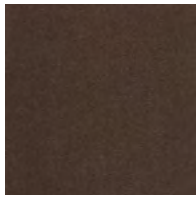
181



426



356



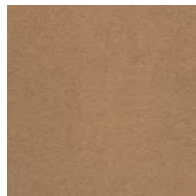
393



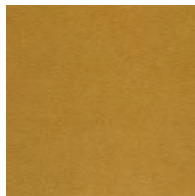
236



224



334



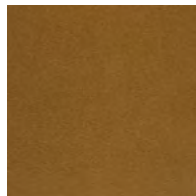
246



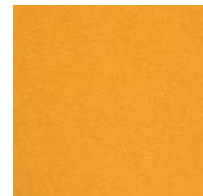
462



106

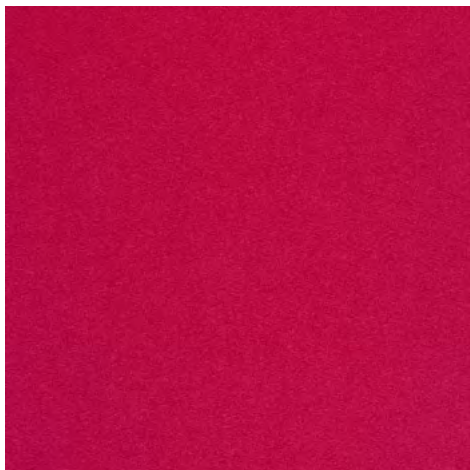


346

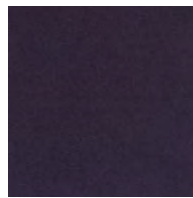


444

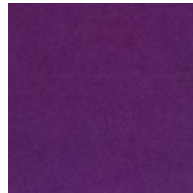
Divina 3



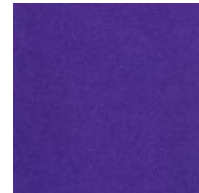
636



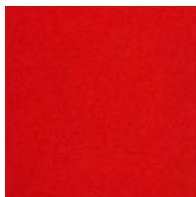
376



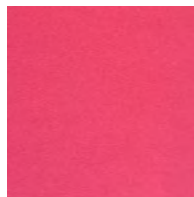
696



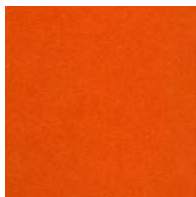
692



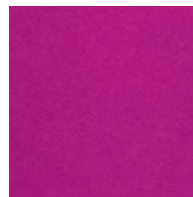
623



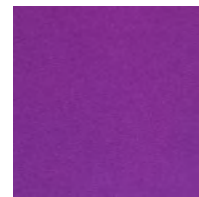
626



562



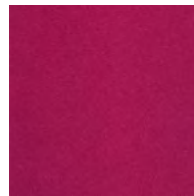
662



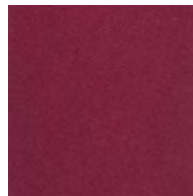
666



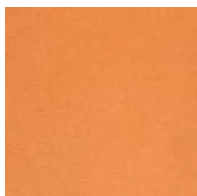
542



652



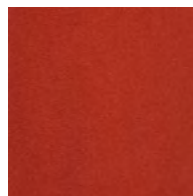
671



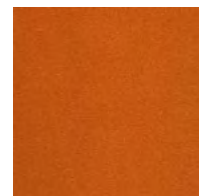
526



536



584



552

Divina 3



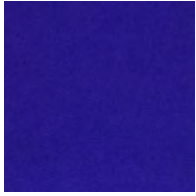
756



742



712



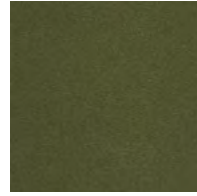
686



782



944



984



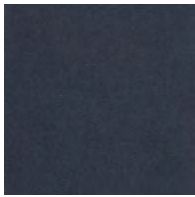
791



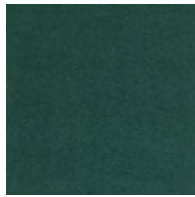
846



856



793



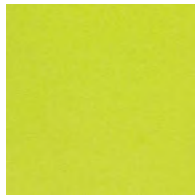
886



876



893



936



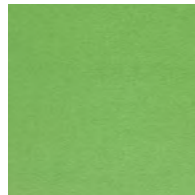
922



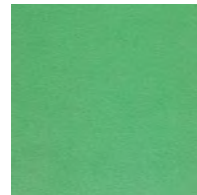
826



836



956



966

Divina 3

Designed by Finn Sködt

DK

Anvendelse Kontorer, hoteller, institutioner, private indretninger.**Beskrivelse** 100% ny uld. Bredder ca. 150 cm. Vægt ca. 840 g/lbm. Stykfarvet. I lyse farver kan fremmede fibre forekomme. Nuanceforskjel kan forekomme.**Ægkant** ↔**Slidstyrke:** Ca. 45.000 slidbevælgelser efter Martindale metoden EN ISO 12947. **Lysægthed** (ISO) 5-7. **Pilling** (EN ISO) 3. **Gnidægthed** (ISO) tør 4-5, våd 3-5. **Lydabsorption** (EN ISO 354) 0.60/Class C (fladt), 0.70/Class C (foldet).**Airflow** 678 Pa s/m. **Flammesikring:** AS/NZS 1530.3. BS 5852 Crib 5. BS 5852 Part 1. BS 5867 Part 2 Type B. EN 1021-1/2. EN 13501, C-s1, d0 limet. GB 50222 med flammesikring. IMO FTP Code 2010:Part 8. NF D 60 013. NFPA 260. SN 198 898 5.3 med flammesikring. UNI 9175 11M. US Cal. Bull. 117-2013. ÖNORM B1 / Q1. (Kopi af testrapport kan rekvireres).**Vedligeholdelse** Se ISO symboler. Strygning uden damp.

UK/US

Application Offices, hotels, institutions, domestic use.**Description** 100% new wool. Width app. 59 inches (150 cm). Weight app. 27.0 oz/ly (840 g/lin.m). Piece dyed. Foreign fibres may occur in light colours. Colour differences may occur.**Selvedge/Direction** ↔**Abrasion:** App. 45,000 rubs acc. to the Martindale method EN ISO 12947.**Lightfastness** (ISO) 5-7. **Pilling** (EN ISO) 3.**Fastness to rubbing** (ISO) dry 4-5, wet 3-5.**Sound absorption** (EN ISO 354) 0.60/Class C (flat), 0.70/Class C (waved). **Airflow** 678 Pa s/m.**Flame resistance:** AS/NZS 1530.3. BS 5852 Crib 5. BS 5852 Part 1. BS 5867 Part 2 Type B. EN 1021-1/2. EN 13501, C-s1, d0 adhered. GB 50222 with treatment. IMO FTP Code 2010:Part 8. NF D 60 013. NFPA 260. SN 198 898 5.3 with treatment. UNI 9175 11M. US Cal. Bull. 117-2013. ÖNORM B1 / Q1. (Copy of test report available).**Care** Please see the ISO symbols. Iron without steam.

DE

Anwendungsbereich Büros, Hotels, Objectbereich, privaten Wohnbereich.**Beschreibung** 100% Schurwolle. Breite ca. 150 cm. Gewicht ca. 840 g/lfd.m. Stückgefärbt. In hellen Farben können Fremdfasern vorkommen. Farbunterschiede können vorkommen.**Webkant** ↔**Scheuerfestigkeit:** Ca. 45.000 Scheuerhübe gemäss der Martindale Methode EN ISO 12947. **Lichtechtheit** (ISO) 5-7. **Pilling** (EN ISO) 3. **Reibechtheit** (ISO) trocken 4-5, nass 3-5.**Schallabsorption** (EN ISO 354) 0.60/Class C (glatt), 0.70/Class C (gefaltet). **Airflow** 678 Pa s/m. **Flammenschutz:** AS/NZS 1530.3. BS 5852 Crib 5. BS 5852 Part 1. BS 5867 Part 2 Type B. EN 1021-1/2. EN 13501, C-s1, d0 verklebt. GB 50222 mit Ausrüstung. IMO FTP Code 2010:Part 8. NF D 60 013. NFPA 260. SN 198 898 5.3 mit Ausrüstung. UNI 9175 11M. US Cal. Bull. 117-2013. ÖNORM B1 / Q1. (Kopie von Prüfungsbericht verfügbar).**Pflege** Siehe ISO Pflegesymbole. Ohne Dampf bügeln.

NL

Toepassing Kantoren, hotels, instellingen, de privéfeer.**Omschrijving** 100% scheerwol. Breedte ca. 150 cm. Gewicht ca. 840 g/str. m. Stukgeverfd. Afwijkende vezels kunnen voorkomen in licht kleuren. Kleurverschillen kunnen optreden.**Zelfkant** ↔**Slijtvastheid:** Ca. 45.000 toeren Martindale EN ISO 12947. **Lichtechtheid** (ISO) 5-7. **Pilling** (EN ISO) 3. **Wrijftechtheid** (ISO) droge 4-5, natte 3-5. **Geluidsabsorptie** (EN ISO 354) 0.60/Class C (vlak), 0.70/Class C (geplooid). **Airflow** 678 Pa s/m. **Brandwerendheid:** AS/NZS 1530.3. BS 5852 Crib 5. BS 5852 Part 1. BS 5867 Part 2

Type B. EN 1021-1/2. EN 13501, C-s1, d0 gelijmd. GB 50222 met behandeling. IMO FTP Code 2010:Part 8. NF D 60 013. NFPA 260. SN 198 898 5.3 met behandeling. UNI 9175 11M. US Cal. Bull. 117-2013. ÖNORM B1 / Q1. (Op aanvraag sturen wij u graag een kopie van het testrapport toe).

Onderhoud Zie de ISO symbolen. Zonder stoom strijken.

FR

Domaine d'utilisation Tissu d'ameublement pour aménagement privé et public.**Description** 100% laine vierge. Largeur env. 150 cm. Poids env. 840 g/m lg. Teinture à la pièce. Dans les couleurs claires, présence de fibres étrangères. Ecart de coloris possibles.**Lisière** ↔**Résistance à l'abrasion:** Env. 45.000 révolutions selon le procédé Martindale EN ISO 12947. **Résistance à la lumière** (ISO) 5-7.**Boulochage** (EN ISO) 3. **Résistance au frottement** (ISO) sec 4-5, mouillé 3-5.**Absorption acoustique** (EN ISO 354)0.60/Class C (à plat), 0.70/Class C (plié). **Airflow** 678 Pa s/m. **Normes au feu:** AS/NZS 1530.3. BS 5852 Crib 5. BS 5852 Part 1. BS 5867 Part 2 Type B. EN 1021-1/2. EN 13501, C-s1, d0 collé. GB 50222 avec traitement. IMO FTP Code 2010:Part 8. NF D 60 013. NFPA 260. SN 198 898 5.3 avec traitement. UNI 9175 11M. US Cal. Bull. 117-2013. ÖNORM B1 / Q1. (La copie du compte rendu des tests est disponible sur demande).**Entretien** Voir les symboles ISO. Repassage sans vapeur.

IT

Destinazione d'uso Rivestimento per imbottiti casa e contract.**Caratteristiche** 100% lana vergine. Altezza circa 150 cm. Peso circa 840 gr/mtl. Tinto in pezza. Nei colori chiari possono essere presenti fibre di tonalità scure. Possibili differenze per colore.**Cimosa** ↔**Abrasion:** Circa 45.000 cicli/metodo Martindale EN 12947. **Resistenza alla luce** (ISO) 5-7. **Pilling** (EN ISO) 3. **Resistenza allo sfregamento** (ISO) condizione a secco 4-5, condizione umido 3-5. **Absorbimento acustico** (EN ISO 354) 0.60/Class C (tenda a pannello (tesa)), 0.70/Class C (tenda arricciata). **Airflow** 678 Pa s/m. **Ignifugazione:** AS/NZS 1530.3. BS 5852 Crib 5. BS 5852 Part 1. BS 5867 Part 2

Type B. EN 1021-1/2. EN 13501, C-s1, d0 incollato. GB 50222 trattato ignifugo. IMO FTP Code 2010:Part 8. NF D 60 013. NFPA 260. SN 198 898 5.3 trattato ignifugo. UNI 9175 11M. US Cal. Bull. 117-2013. ÖNORM B1 / Q1. (Disponibile copia del test).

Manutenzione Per favore seguire simboli ISO. Stirare senza vapore.

ES

Aplicación Oficinas, hoteles, instituciones, uso doméstico.**Descripción** 100% lana virgen. Anchura aprox. 150 cm. Peso aprox. 840 gr/ml. Teñido a la pieza. En los colores claros puede haber fibras de otro color. Posibles variaciones de color.**Filo** ↔**Resistencia al desgaste:** Aprox. 45.000 ciclos según el método Martindale EN ISO 12947.**Resistencia a la luz** (ISO) 5-7. **Relleno** (EN ISO) 3. **Solidez al frotamiento** (ISO) seco 4-5, mojado 3-5. **Absorción acústica** (EN ISO 354)0.60/Class C (estor), 0.70/Class C (cortina). **Airflow** 678 Pa s/m. **Resistencia al fuego:**AS/NZS 1530.3. BS 5852 Crib 5. BS 5852 Part 1. BS 5867 Part 2 Type B. EN 1021-1/2. EN 13501, C-s1, d0 adherido. GB 50222 con tratamiento. IMO FTP Code 2010:Part 8. NF D 60 013. NFPA 260. SN 198 898 5.3 con tratamiento. UNI 9175 11M. US Cal. Bull. 117-2013. ÖNORM B1 / Q1. (Copia del informe de ensayos disponible). **Mantenimiento** Consulte los símbolos ISO. Planchar sin vapor.

JP

用途 オフィス、ホテル、各種施設、住宅インテリア。**詳細** 100% ニューウール。幅:150 cm。重量:1mあたり約840 g。製品染め。明色の場合異質繊維が混在する場合あり。色彩ニューアンスに多少の違いが生じる可能性あり。**耳、ふち** ↔**テスト****磨耗:** マーチンデール法により摩擦運動約45,000回。EN ISO 12947. **色褪せ保証:** (ISO) 5-7. **ピリング** (EN ISO) 3. **摩擦保証:** (ISO) 乾燥状態4-5、濡れた状態3-5. **吸音率** (EN ISO 354) 0.60/Class C (パネル状)、0.70/Class C (ドレープ状)。**気流:** 678 Pa s/m. **耐炎性:** AS/NZS 1530.3. BS 5852 Crib 5. BS 5852 Part 1. BS 5867 Part 2 Type B. EN 1021-1/2. EN 13501, C-s1, d0 耐火性レベル。特殊耐炎処理を行うことにより、GB 50222 に到達可能。IMO FTP Code 2010:Part 8. NF D 60 013. NFPA 260. 特殊耐炎処理を行うことにより、SN 198 898 5.3 に到達可能。UNI 9175 11M。US Cal. Bull. 117-2013. (ÖNORM B1 / Q1. テストレポートのコピー入手可能。)**手入れ**

ISO シンボル参照。アイロンはスチームなしでかけてください。

CN

适用范围 办公室, 宾馆酒店, 公共设施, 居家使用。**成分** 100% 羊毛。幅宽59英寸(150cm)。重量840克/延米, 匹染色面料。浅色面料可能会有外来纤维。颜色可能稍有色差。**图纹方向** ↔**马丁代尔法**约45,000转。EN ISO 12947. **光照色牢度** (ISO) 5-7. **起毛起球** (EN ISO) 3. **摩擦色牢度** (ISO) 干燥4-5, 湿3-5. **吸声系数** (EN ISO 354) 0.60/Class C (隔断帘), 0.70/Class C (一般窗帘使用)。**气流阻力** 678 Pa s/m. **阻燃性:** AS/NZS 1530.3. BS 5852 Crib 5. BS 5852 Part 1. BS 5867 Part 2 Type B. EN 1021-1/2. EN 13501, C-s1, d0 防火等级。特别耐火处理时GB 50222 可以满足。IMO FTP Code 2010:Part 8. NF D 60 013. NFPA 260. 特别耐火处理时SN 198 898 5.3 可以满足。UNI 9175 11M. US Cal. Bull. 117-2013. ÖNORM B1 / Q1. (可提供测试报告副本)。**维护** 请参照ISO标志。可熨烫但要避免蒸汽。

10 year warranty



Quality and environmental system accreditation according to ISO 9001 and ISO 14001.

*ACT® Registered Certification Marks

Encouraging the use of sustainable fibres. Durable and high quality. Hazardous substances restricted.

Contact and further information www.kvadrat.dk

US contact info: 1-800-620-9309