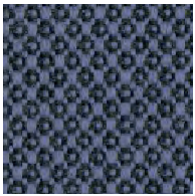
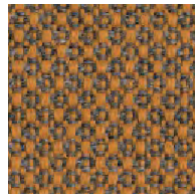


Fiord 2

kvadrat



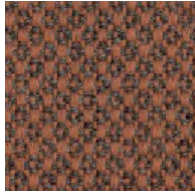
672



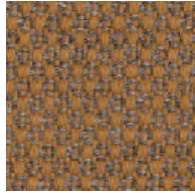
442



422



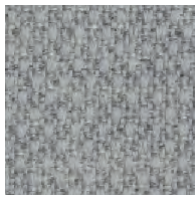
562



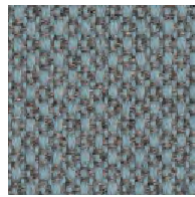
451



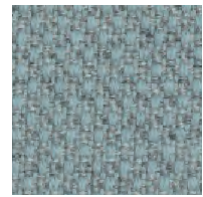
101



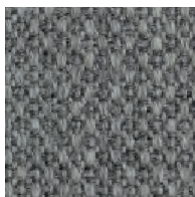
121



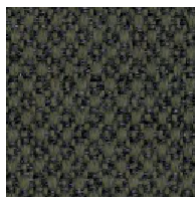
821



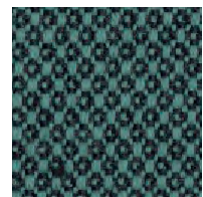
721



151



961



862



171



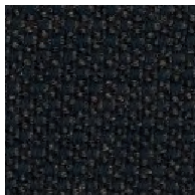
951



971



191



382



991

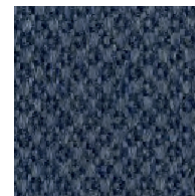


981

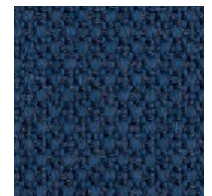
Fiord 2



642



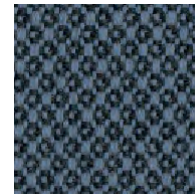
771



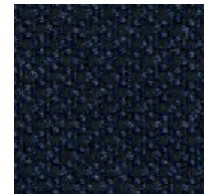
791



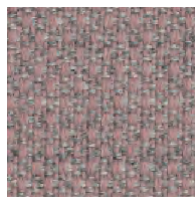
751



762



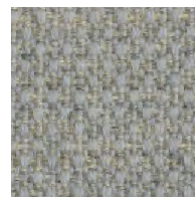
782



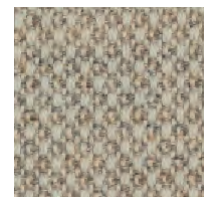
521



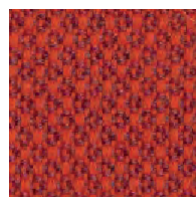
551



201



322



571



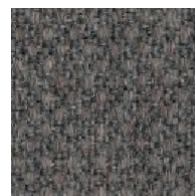
251



262



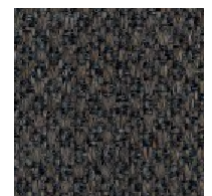
662



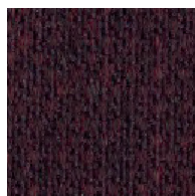
351



271



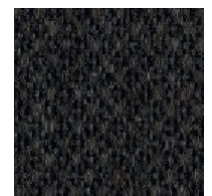
371



591



581



391

Fiord 2

Designed by Louise Sigvardt & Tone Barnung

DK

Anvendelse Kontorer, hoteller, institutioner, private indretninger. Stor slidstyrke.

Beskrivelse 92% ny uld, kamgarn, 8% nylon. Bredde ca. 140 cm. Vægt ca. 500 g/lbm.

Garnfarver. Nuanceforskelle kan forekomme.

Ægkants

Slidstyrke: Ca. 60.000 slidbevægelser efter Martindale metoden EN ISO 12947. **Lysægtighed (ISO) 5-7. Pilling (EN ISO) 4-5. Gnidægtighed (ISO) tør 3-5, våd 3-5. Flammesikring:** AS/NZS 3837 Class 2. ASTM E84 Class A limet. ASTM E84 Class A hæftet. BS 5852 Crib 5 med flammesikring. BS 5852 part 1. EN 1021-1/2. GB 50222 B1 med flammesikring. IMO FTP Code 2010:Part 8. NF D 60 013. NFPA 260. SN 198 898 5.3 med flammesikring. UNI 9175 11M. US Cal. Bull. 117-2013. ÖNORM B1 / Q1. (Kopi af testrapport kan rekvireres).

Vedligeholdelse Se ISO symboler. Desinfektion, se kvadrat.dk.

UK/US

Application Offices, hotels, institutions, domestic use. Great durability.

Description 92% new wool, worsted, 8% nylon.

Width app. 55 inches (140 cm). Weight app.

500 g/lin.m, 16.0 oz/ly. Yarn dyed. Colour differences may occur.

Selvedge/Direction

Abrasion: App. 60,000 rubs acc. to the Martindale method EN ISO 12947*.

Lightfastness (ISO) 5-7. Pilling (EN ISO) 4-5. Fastness to rubbing (ISO) dry 3-5, wet 3-5. Flame resistance: AS/NZS 3837 Class 2. ASTM E84 Class A adhered. BS 5852 Crib 5 with treatment. BS 5852 part 1. EN 1021-1/2. GB 50222 B1 with treatment. IMO FTP Code 2010:Part 8. NF D 60 013. NFPA 260. SN 198 898 5.3 with treatment. UNI 9175 11M. US Cal. Bull. 117-2013. ÖNORM B1 / Q1. (Copy of test report available).

Care Please see the ISO symbols. Disinfection, see kvadrat.dk.

Lightfastness (ISO) 5-7. Pilling (EN ISO) 4-5. Fastness to rubbing (ISO) dry 3-5, wet 3-5. Flame resistance: AS/NZS 3837 Class 2. ASTM E84 Class A adhered. BS 5852 Crib 5 with treatment. BS 5852 part 1. EN 1021-1/2. GB 50222 B1 with treatment. IMO FTP Code 2010:Part 8. NF D 60 013. NFPA 260. SN 198 898 5.3 with treatment. UNI 9175 11M. US Cal. Bull. 117-2013. ÖNORM B1 / Q1. (Copy of test report available).

Care Please see the ISO symbols. Disinfection, see kvadrat.dk.

Care Please see the ISO symbols. Disinfection, see kvadrat.dk.

Care Please see the ISO symbols. Disinfection, see kvadrat.dk.

Care Please see the ISO symbols. Disinfection, see kvadrat.dk.

Care Please see the ISO symbols. Disinfection, see kvadrat.dk.

Care Please see the ISO symbols. Disinfection, see kvadrat.dk.

Care Please see the ISO symbols. Disinfection, see kvadrat.dk.

Care Please see the ISO symbols. Disinfection, see kvadrat.dk.

Care Please see the ISO symbols. Disinfection, see kvadrat.dk.

Care Please see the ISO symbols. Disinfection, see kvadrat.dk.

Care Please see the ISO symbols. Disinfection, see kvadrat.dk.

Care Please see the ISO symbols. Disinfection, see kvadrat.dk.

Care Please see the ISO symbols. Disinfection, see kvadrat.dk.

Care Please see the ISO symbols. Disinfection, see kvadrat.dk.

Care Please see the ISO symbols. Disinfection, see kvadrat.dk.

Care Please see the ISO symbols. Disinfection, see kvadrat.dk.

Care Please see the ISO symbols. Disinfection, see kvadrat.dk.

Care Please see the ISO symbols. Disinfection, see kvadrat.dk.

Care Please see the ISO symbols. Disinfection, see kvadrat.dk.

Care Please see the ISO symbols. Disinfection, see kvadrat.dk.

Care Please see the ISO symbols. Disinfection, see kvadrat.dk.

Care Please see the ISO symbols. Disinfection, see kvadrat.dk.

Care Please see the ISO symbols. Disinfection, see kvadrat.dk.

Care Please see the ISO symbols. Disinfection, see kvadrat.dk.

Care Please see the ISO symbols. Disinfection, see kvadrat.dk.

Care Please see the ISO symbols. Disinfection, see kvadrat.dk.

Care Please see the ISO symbols. Disinfection, see kvadrat.dk.

Care Please see the ISO symbols. Disinfection, see kvadrat.dk.

Care Please see the ISO symbols. Disinfection, see kvadrat.dk.

Care Please see the ISO symbols. Disinfection, see kvadrat.dk.

Care Please see the ISO symbols. Disinfection, see kvadrat.dk.

Care Please see the ISO symbols. Disinfection, see kvadrat.dk.

Care Please see the ISO symbols. Disinfection, see kvadrat.dk.

Care Please see the ISO symbols. Disinfection, see kvadrat.dk.

Care Please see the ISO symbols. Disinfection, see kvadrat.dk.

Care Please see the ISO symbols. Disinfection, see kvadrat.dk.

Care Please see the ISO symbols. Disinfection, see kvadrat.dk.

Care Please see the ISO symbols. Disinfection, see kvadrat.dk.

Care Please see the ISO symbols. Disinfection, see kvadrat.dk.

Care Please see the ISO symbols. Disinfection, see kvadrat.dk.

Care Please see the ISO symbols. Disinfection, see kvadrat.dk.

Care Please see the ISO symbols. Disinfection, see kvadrat.dk.

Care Please see the ISO symbols. Disinfection, see kvadrat.dk.

Care Please see the ISO symbols. Disinfection, see kvadrat.dk.

Care Please see the ISO symbols. Disinfection, see kvadrat.dk.

Care Please see the ISO symbols. Disinfection, see kvadrat.dk.

Care Please see the ISO symbols. Disinfection, see kvadrat.dk.

Care Please see the ISO symbols. Disinfection, see kvadrat.dk.

Quality and environmental system accreditation according to ISO 9001 and ISO 14001.

*ACT® Registered Certification Marks

* Abrasion test results exceeding ACT performance guidelines are not an indicator of product lifespan. Multiple factors affect fabric durability and appearance retention.

EU Ecolabel: Encouraging the use of sustainable fibres. Durable and high quality. Hazardous substances restricted.

Contact and further information www.kvadrat.dk

**NL**

Toepassings Kantoren, hotels, instellingen, de privéfeer. Uitstekende slijtvastheid.

Omschrijving 92% scheerwol, kamgaren, 8% nylon. Breedte ca. 140 cm. Gewicht ca. 500 gr/str. m. Garengenverfd. Kleurverschillen kunnen optreden.

Zelfkant

Sljtvastheid: Ca. 60.000 toeren Martindale EN ISO 12947. **Lichtechtheid (ISO) 5-7. Pilling (EN ISO) 4-5. Wrijftechtheid (ISO) droge 3-5, natte 3-5. Brandwerendheid:** AS/NZS 3837 Class 2. ASTM E84 Class A gelijkmd. ASTM E84 Class A ongelijkmd. BS 5852 Crib 5 met behandeling. BS 5852 part 1. EN 1021-1/2. GB 50222 B1 met behandeling. IMO FTP Code 2010:Part 8. NF D 60 013. NFPA 260. SN 198 898 5.3 met behandeling. UNI 9175 11M. US Cal. Bull. 117-2013. ÖNORM B1 / Q1. (Op aanvraag sturen wij u graag een kopie van het testrapport toe). **Onderhoud** Zie de ISO symbolen. Desinfectie, kvadrat.dk.

FR

Domaine d'utilisation Tissu d'ameublement pour aménagement privé et public. Grande résistance.

Description 92% laine vierge, peigné, 8% nylon. Largeur env. 140 cm. Poids env. 500 g/m lg. Teinture sur fil. Ecart des coloris possibles.

Lisière

Résistance à l'abrasion: Env. 60.000 révolutions selon le procédé Martindale EN ISO 12947. **Résistance à la lumière (ISO) 5-7. Boulochage (EN ISO) 4-5. Résistance au frottement (ISO) sec 3-5, mouillé 3-5. Normes au feu:** AS/NZS 3837 Class 2. ASTM E84 Class A collé. ASTM E84 Class A non collé. BS 5852 Crib 5 avec traitement. BS 5852 part 1. EN 1021-1/2. GB 50222 B1 avec traitement. IMO FTP Code 2010:Part 8. NF D 60 013. NFPA 260. SN 198 898 5.3 avec traitement. UNI 9175 11M. US Cal. Bull. 117-2013. ÖNORM B1 / Q1. (La copie du compte rendu des tests est disponible sur demande). **Entretien** Voir les symboles ISO. Désinfection, voir kvadrat.dk.

IT

Destinazione d'uso Rivestimenti per imbottiti, casa e contract. Alta resistenza all'abrasione. **Caratteristiche** 92% lana vergine, pettinata, 8% nylon. Altezza circa 140 cm. Peso circa 500 gr/ml. Tinto in filo. Possibili differenze per colore. **Cimosa**

Resistenza all'abrasione: circa 60.000 cicli/metodo Martindale EN ISO 12947. **Resistenza alla luce (ISO) 5-7. Pilling (EN ISO) 4-5. Resistenza allo sfregamento (ISO) condizione a secco 3-5, condizione umido 3-5. Ignifugazione:** AS/NZS 3837 Class 2. ASTM E84 Class A incollato. ASTM E84 Class A non incollato. BS 5852 Crib 5 trattato ignifugo. BS 5852 part 1. EN 1021-1/2. GB 50222 B1 trattato ignifugo. IMO FTP Code 2010:Part 8. NF D 60 013. NFPA 260. SN 198 898 5.3 trattato ignifugo. UNI 9175 11M. US Cal. Bull. 117-2013. ÖNORM B1 / Q1. (Disponibile copia del test). **Manutenzione** Per favore seguire simboli ISO. Per disinfettare, vedi il sito kvadrat.dk.

ES

Aplicación Adecuado para el uso en oficinas, hoteles, instituciones y hogares. Gran resistencia al desgaste.

Decripción 92% lana virgen, peinada, 8% nilón. Anchura aprox. 140 cm. Peso aprox. 500 gr/ml. Hiló teñido. Posibles variaciones de color.

Filo

Resistencia al desgaste: Aprox. 60.000 ciclos según el método Martindale EN ISO 12947. **Resistencia a la luz (ISO) 5-7. Relleno (EN ISO) 4-5. Solidez al frotamiento (ISO) seco 3-5, mojado 3-5. Resistencia al fuego:** AS/NZS 3837 Class 2. ASTM E84 Class A pegado. ASTM E84 Class A sin pegar. BS 5852 Crib 5 con tratamiento. BS 5852 part 1. EN 1021-1/2. GB 50222 B1 con tratamiento. IMO FTP Code 2010:Part 8. NF D 60 013. NFPA 260. SN 198 898 5.3 con tratamiento. UNI 9175 11M. US Cal. Bull. 117-2013. ÖNORM B1 / Q1. (Copia del informe de ensayos disponible). **Limpeza** Consulte los símbolos ISO. Desinfección, visita kvadrat.dk.

JP

用途 オフィス、ホテル、各種施設、住宅インテリア。耐耗性大。

詳細 92% ニューウール。ウーステッド、8% ナイロン。幅：140cm。重量：1mあたり約500gr。系染め。明色の場合、異質繊維が混在する場合があります。色彩ニュアンスに多少の違いが生じる可能性あり。

耳、ふち、

テスト
磨耗：マーチンデール法により摩擦運動約60,000回。EN ISO 12947. **色褪せ保証：**(ISO) 5-7. **ピリング** (EN ISO) 4-5. **摩擦保証：**(ISO) 乾燥状態 3-5、濡れた状態 3-5. **耐炎性：**AS/NZS 3837 Class 2. ASTM E84 Class A adhered. ASTM E84 Class A unadhered. 特殊耐炎処理を行うことにより、BS 5852 Crib 5 に到達可能。BS 5852 part 1. EN 1021-1/2. 特殊耐炎処理を行うことにより、GB 50222 B1 に到達可能。IMO FTP Code 2010:Part 8. NF D 60 013. NFPA 260. 特殊耐炎処理を行うことにより、SN 198 898 5.3 に到達可能。UNI 9175 11M. US Cal. Bull. 117-2013. ÖNORM B1 / Q1. (テストレポートコピー入手可能。)

手入れ

ISO シンボル参照。消毒について?kvadrat.dkまで参照ください。

CN

适用范围 办公室, 宾馆酒店, 公共设施, 居家使用。耐耗性大。

成分 92%新羊毛, 精纺, 8%尼龙。幅宽约55英寸(140 cm)。重量500克/延米, 纱染色面料。颜色可能稍有差。

织边方向

马丁代尔法约60,000转。EN ISO 12947. **光照色牢度 (ISO) 5-7. 起毛起球 (EN ISO) 4-5. 磨擦色牢度 (ISO) 干燥 3-5, 湿 3-5. 阻燃性:** AS/NZS 3837 Class 2. ASTM E84 Class A adhered. ASTM E84 Class A unadhered. 特别耐火处理时BS 5852 Crib 5 可以满足。BS 5852 part 1. EN 1021-1/2. 特别耐火处理时GB 50222 B1 可以满足。IMO FTP Code 2010:Part 8. NF D 60 013. NFPA 260. 特别耐火处理时SN 198 898 5.3 可以满足。UNI 9175 11M. US Cal. Bull. 117-2013. ÖNORM B1 / Q1. (可提供测试报告副本)。 **维护** 请参照ISO标志。消毒请参阅kvadrat.dk。

10 year warranty



US contact info: 1-800-620-9309