

GRIFFON



501



502



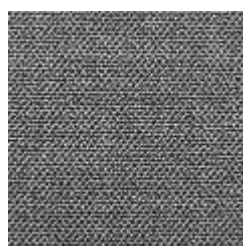
503



504



505



506



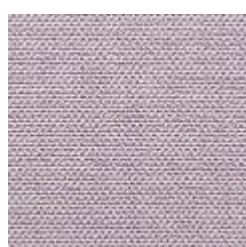
507



830



995-FE



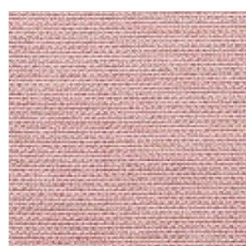
995-FF



995-TD



995-TE



995-TH

GRIFFON

EN

Composition: 62% Poly Acrylic, 27% Polyester, 11% Polypropylene
Maintenance: Vacuum regularly or professional Dry-clean
Abrasion Resistance: 30.000 Martindale cycles

DE

Zusammensetzung: 62% Poly Acryl, 27% Polyester, 11% Polypropylene
Reinigung: Regelmässig staubsaugen. Professionelle Trockenreinigung
Scheuerfestigkeit: 30.000 Martindale

FR

Composition: 62% Poly Acrylique, 27% Polyester, 11% Polypropylène
Nettoyage: Aspirer régulièrement. Nettoyage á sec professionnel
Résistance á l'abrasion: 30.000 cycles Martindale

DK

Materiale: 62% Poly akryl, 27% Polyester, 11% Polypropylene
Rengøring: Støvsug regelmæssigt eller professionel rens
Slidstyrke: 30.000 Martindale