

Synergy

camira



Congregate
LDS83



Affinity
LDS74



Fate
LDS07



Venture
LDS05



Mutual
LDS84



Likeness
LDS82



Work
LDS73



Fellowship
LDS66



Share
LDS85



Similar
LDS81



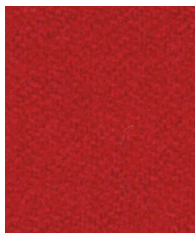
Contribution
LDS75



Compose
LDS72



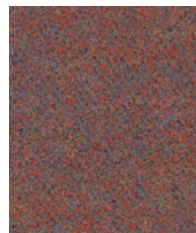
Warmth
LDS67



Global
LDS86



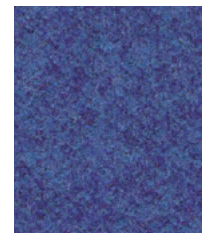
Apt
LDS80



Success
LDS76



Open
LDS71



Collaborate
LDS68



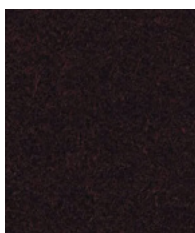
Values
LDS87



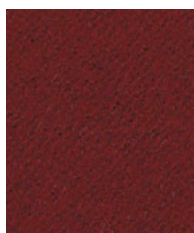
Combo
LDS77



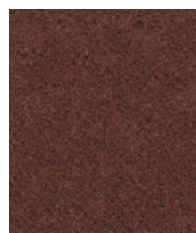
Medley
LDS36



Process
LDS88



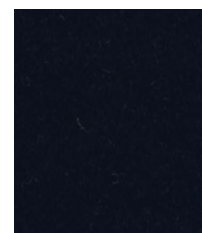
Amiable
LDS79



Cordial
LDS78



Together
LDS70



Sync
LDS69

Photographic fabric scans are not color accurate. Always request actual fabric samples before ordering.



Huddle
LDS65



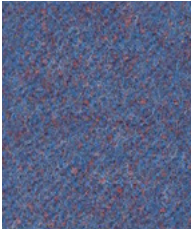
Support
LDS55



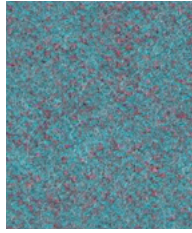
Regard
LDS54



Summon
LDS45



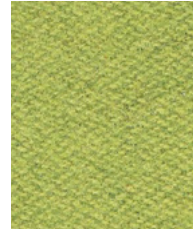
Order
LDS64



Kinship
LDS56



Pact
LDS53



Gather
LDS46



Relate
LDS44



Guild
LDS63



Engage
LDS57



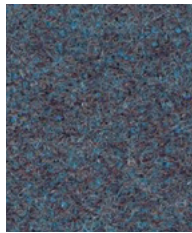
Comply
LDS52



Integrate
LDS47



Lateral
LDS28



Family
LDS58



Kindness
LDS51



Interfuse
LDS48



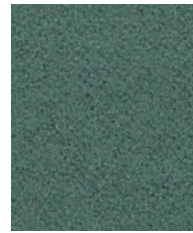
Alike
LDS62



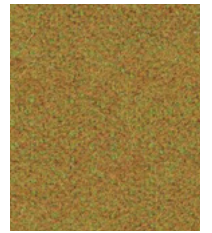
Group
LDS59



League
LDS50



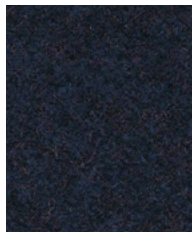
Append
LDS49



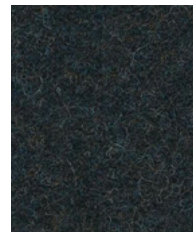
Marry
LDS43



Assemble
LDS61



Accord
LDS60



Couple
LDS41



Intertwine
LDS42

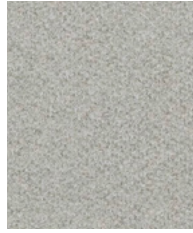
Photographic fabric scans are not color accurate. Always request actual fabric samples before ordering.



Loop
LDS18



Bracket
LDS23



Chain
LDS19



Chemistry
LDS35



Affix
LDS32



Serendipity
LDS08



Frame
LDS22



Tag
LDS33



Partner
LDS16



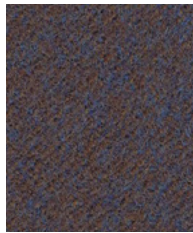
Level
LDS20



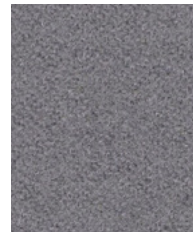
Team
LDS21



Linea
LDS37



Unity
LDS38



Pair
LDS31



Bond
LDS24



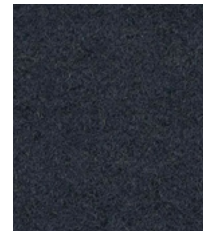
Collective
LDS39



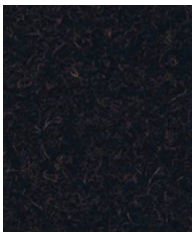
Mix
LDS17



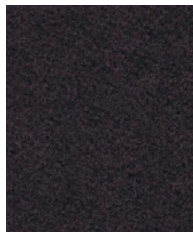
Hook
LDS29



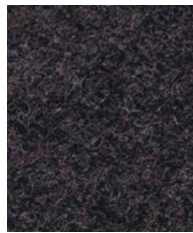
Compound
LDS25



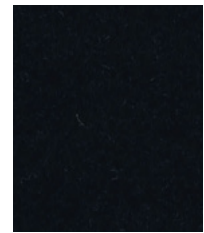
Co-operate
LDS40



Bridge
LDS26



Wed
LDS34



Seek
LDS27



Task seating



Lounge seating



Panels



Year guarantee

2+2 = 75. Where the total is more than the sum of the parts. Say hello to Synergy, a soft handle wool blend fabric, featuring exquisite fiber dyed shades and sumptuous piece dyed solids. It all comes together to provide our largest color offering of 75 intelligent shades.

We have partnered with Just A Drop, the international water aid charity, and for every yard of fabric we sell, we will make a donation to a specific project around the world, helping to provide clean and safe water to those in need.



Synergy meets the ACT voluntary Performance Guidelines and is classified for Heavy Duty Upholstery.



Technical information

EN

Composition

95% Pure New Wool, 5% Nylon

Environment

Certified to the EU Ecolabel
Certified to Indoor Advantage™ Gold

Width

54 inches minimum

Weight

11^{3/4} oz/sq yd ±5% (17^{3/4} oz/running yd ±5%)

Abrasion Resistance*

D4966 Martindale method, Heavy Duty Upholstery
Independently certified to ≥100,000 cycles
Covered by a full and comprehensive 10 year guarantee (full details available)

Flammability

California Technical Bulletin 117 - 2013
NFPA 260 + UFAC - Class 1
BS 7176 Low Hazard
ASTM E84 Class 2 or B (Adhered)
ASTM E84 Class 2 or B (Un-adhered)
Optional please specify when ordering:
ASTM E84 Class 1 or A (Adhered) when FR treated
Note: Flammability performance is dependent on components used. Our certificates show what substrates have been used in our tests. For composite tests customers must ensure their complete furniture meets the necessary standards.

Color Fastness to Light

AATCC-16 (40 hours) Class 4

Color Fastness to Crocking

AATCC-8 (Dry: 4, Wet: 3)

Cleaning

W/S
Clean with a water-based cleaning agent or solvent:
Depending on the stain, you can use a dry-cleaning solvent, the foam of a mild detergent, or upholstery shampoo.

*Camira recognizes that the number of Martindale cycles do not reflect the actual wear performance of fabrics. We're so confident in the durability of our products that we provide a robust 10 year guarantee (full details available). This product is externally certified, details of which are on our website and available from our customer services team.
Multiple factors affect fabric durability and appearance retention, including end-user application and correct maintenance. Results above 100,000 cycles have not been shown to be a reliable indicator of increased fabric lifespan.
Batch to batch variations in shade may occur within commercial tolerances. We reserve the right to alter technical specifications without notice. The Unregistered Design Rights and the Copyright in all designs are the exclusive property of Camira Fabrics Limited.

F

Composition

95% Pure Laine Vierge, 5% Nylon

Écologique

Avec le certificat EU Ecolabel
Certifié à Indoor Advantage™ Gold

Largeur

54 pouces minimum

Poids

11^{3/4} oz/sq yd ±5% (17^{3/4} oz/lin.yd ±5%)

Résistance à l'abrasion*

D4966 Martindale method, Heavy Duty Upholstery
Certificat indépendant ≥100,000 cycles
Avec une garantie totale de durabilité de 10 ans (renseignements complémentaires disponibles)

Flammabilité

California Technical Bulletin 117 - 2013
NFPA 260 + UFAC - Class 1
BS 7176 Low Hazard
ASTM E84 Class 2 or B (Adhered)
ASTM E84 Class 2 or B (Un-adhered)
Prière de le mentionner lors de la commande:
ASTM E84 Class 1 or A (Adhered) si traitement FR
Notez: La performance de flammabilité dépend des composantes utilisées. Nos certificats indiquent les substrats utilisés dans nos tests. Pour les tests composites, les clients doivent s'assurer que leurs meubles complets satisfont aux normes nécessaires.

Solidité à la Lumière

AATCC-16 (40 heures) Class 4

Solidité à la Crocking

AATCC-8 (Sec: 4, Mouillé: 3)

Nettoyage

W/S
Nettoyer avec un produit d'entretien à base d'eau: en fonction de la tâche, vous pouvez nettoyer à sec, à l'aide d'un détergent ou bien avec du shampooing pour meubles.

*Camira reconnaît que le nombre de Martindale cycles ne reflète pas la performance de l'usure réelle des tissus. Nous sommes tellement confiants dans la pérennité de nos produits que nous offrons une garantie solide de 10 ans (plus de détails disponibles). Cette gamme est certifiée externe, vous pouvez d'ailleurs trouver plus de détails sur notre site internet ou en contactant un membre de notre Service Clients.
La durabilité d'un tissu et sa capacité à conserver son aspect sont affectées par divers facteurs, y compris son environnement d'installation et son entretien. Un résultat de 100 000 ou plus (Martindale) n'est pas un indicateur fiable quant à la longévité d'un tissu.
Une variation de couleurs peut provenir (commerciallement tolérable). Nous réservons le droit de changer les spécifications techniques sans préavis. Les Droits de Conception non-enregistrés et les droits d'auteur de tous les motifs sont la propriété exclusive de Camira Fabrics Limited.

ES

Composición

95% Pura Lana Virgen, 5% Nylon

Ambiental

Certificado con EU Ecolabel
Certificado de Indoor Advantage™ Gold

Ancho

54 pulgadas mínimo

Peso

11^{3/4} oz/sq yd ±5% (17^{3/4} oz/lin.y ±5%)

Resistencia a la abrasión*

D4966 Martindale method, Heavy Duty Upholstery
independientemente del certificado de ≥100,000 ciclos
Con garantía de uso 10 años (más información disponible bajo consulta)

Inflamabilidad

California Technical Bulletin 117 - 2013
NFPA 260 + UFAC - Class 1
BS 7176 Low Hazard
ASTM E84 Class 2 or B (Adhered)
ASTM E84 Class 2 or B (Un-adhered)
Por favor especificar cuando se requiere en el pedido:
ASTM E84 Class 1 or A (Adhered) estando con tratamiento FR
Nota: El rendimiento de la inflamabilidad depende de los componentes usados. Nuestros certificados muestran qué substratos se han usado en nuestros tests. Para tests compuestos nuestros clientes deben asegurar si sus muebles cumplen la normativa al uso.

Solidez a la Luz

AATCC-16 (40 horas) Class 4

Solidez al Rozamiento

AATCC-8 (Seco: 4, Húmedo:3)

Limpieza

W/S
Lavar con un producto de limpieza neutro o solvente:
en función de la suciedad o mancha, se puede limpiar con un producto de limpieza en seco, espuma templada o producto de limpieza de sofás.

*Camira reconoce que el número de Martindale ciclos no refleja el rendimiento real del desgaste de los tejidos. Estamos tan seguros de la durabilidad de nuestros tejidos que ofrecemos una garantía íntegra de 10 años (los detalles completos están disponibles). Esta gama está certificada externamente, todos los detalles están disponibles en nuestra web y en el departamento de atención al cliente.
Muchos factores afectan la durabilidad y el aspecto del tejido, incluyendo el usuario final y el mantenimiento adecuado. Por encima de 100,000 ciclos de Martindale, no se ha demostrado que indique una mayor durabilidad de los tejidos.
Se reserva el derecho de modificar las especificaciones técnicas sin previo aviso. Los derechos sobre dibujos no registrados y los derechos de autor sobre todos los dibujos son propiedad exclusiva de Camira Group Inc.