

DUCT  
CONDOR



## DUCT COLLECTION BY STUDIO SEGERS

„When people choose a chair for their home, most of the time they fall in love with it at first sight.“



DUCT  
ARMCHAIR  
[ 62 x 56 x 75 cm ]







DUCT DINING TABLE

CERAMIC/HPL TABLE TOPS

[ 160 x 100 x 76 cm ]

[ 220 x 100 x 76 cm ]

[ 300 x 100 x 76 cm ]

## MATERIALS

### POWDER COATED ALUMINIUM / STAINLESS STEEL FRAMES

100% polyester is used for powder coating.



WHITE  
110

GREY  
105

ANTHRACITE  
145

BLUE  
175

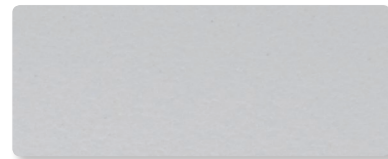
DARK GREEN  
180

### CERAMIC TABLE TOPS

Ceramic is a 100% natural product. It does not contain any organic pigments and is thus resistant to UV rays, so it's perfectly colour stable. Ceramic as a material is highly abrasion resistant.



WHITE  
210



PEARL  
212



FUME  
214



ANTHRACITE STONE  
217



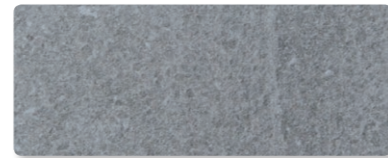
OXIDO BLACK  
218



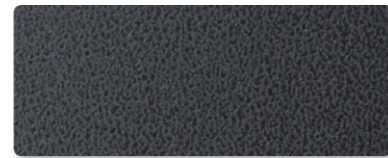
STONE IVORY  
211



PEARL STONE  
213



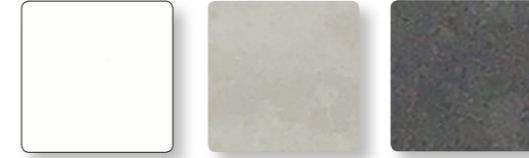
GREY STONE  
215



BLACK  
216

### HPL TABLE TOPS

High pressure laminate (HPL) is a flat thermo hardening resin-based sheet. It is reinforced with wood-based fibers and manufactured at high pressure and temperature.



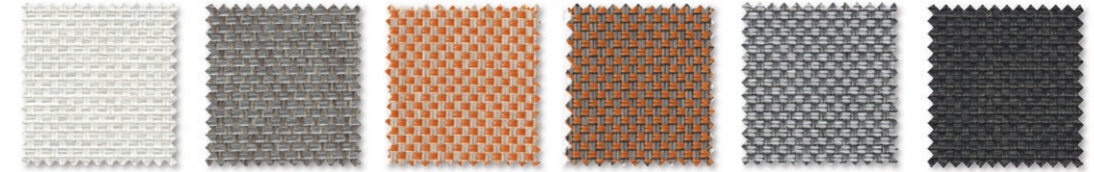
WHITE  
310

GREY  
335

DARK GREY  
336

### FABRICS FOR CUSHIONS

Crevin is a unique upholstery fabric for joint indoor outdoor use. It has a homely and natural appearance and can be easily cleaned by domestic machine-wash. It is finished with stain repellence.



WHITE  
410

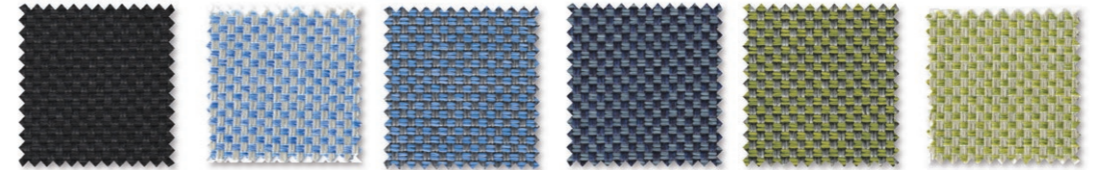
BROWN GREY  
427

LIGHT ORANGE  
423

ORANGE  
424

GREY  
435

ANTHRACITE  
445



BLACK  
450

LIGHT BLUE  
477

BLUE  
478

DARK BLUE  
479

GREEN  
480

LIGHT GREEN  
481