



FLOWERPOT VP4

by Verner Panton

ASSEMBLY INSTRUCTIONS

andtradition.com

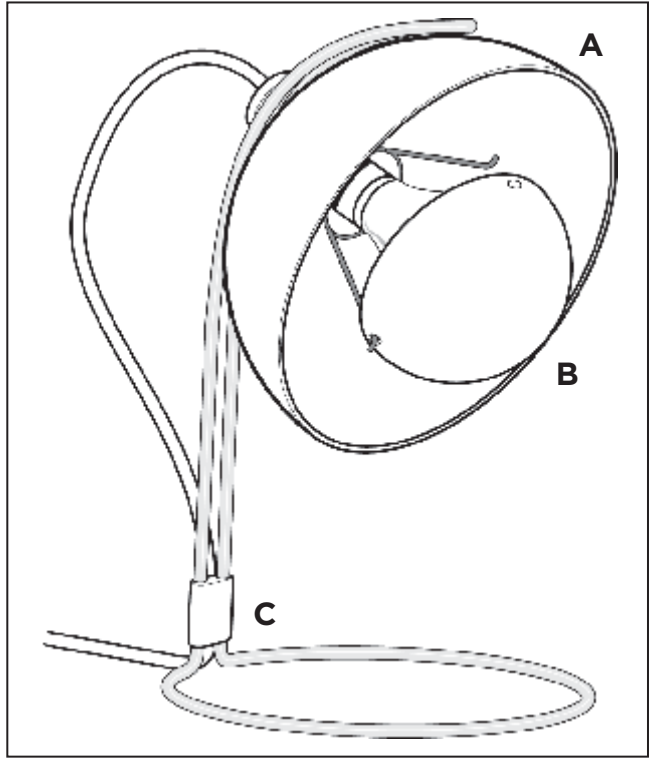
Congratulations on choosing this original FlowerPot table lamp, designed in 1969 by Verner Panton. We hope you will enjoy using this lamp and follow these instructions to ensure correct use. If you have any questions or comments, please do not hesitate to contact us by mail on: info@andtradition.dk

Contents:

- A** - Shade
- B** - Undershade & base
- C** - Shade stand with 3 meter fabric cord.

Please read these instructions carefully and retain them for future reference to ensure that the lamp is correctly installed should it be moved or sold. For your own safety, please study each step of this instruction manual before you commence installation. &Tradition are not responsible for any faults or damages caused by not following these instructions correctly. Do not modify this lamp in any way.

Bulb type:
E27 fitting 40 watt
tungsten or 7 watt low
energy bulb.



Installation Suggestions:

The FlowerPot VP4 table lamp can be used as a stand alone lighting source in combination with the other lamps in the FlowerPot series. Place it on an office desk, cabinet or bedside table. Different colours can also be combined. Visit our website for more inspiration:
www.andtradition.com

Safety Precautions:

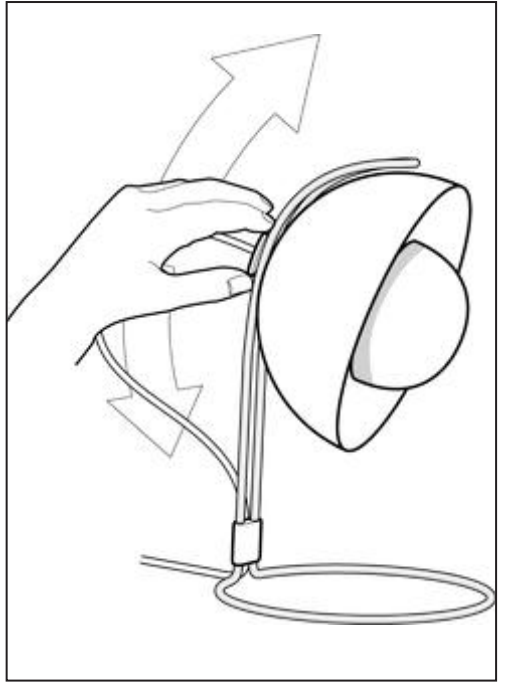
- Dispose of plastic bag from packaging and do not allow children to play with it.
- Keep product well out of children's reach.
- The lamp is only intended for interior use.
- Lamp exterior gets hot after prolonged use.
- Do not attempt installation of product if you are not competent to do so yourself.
- Consult a professionally qualified electrician if in any doubt.
- Do not place the cable in reach of small children or anywhere there is a risk of falling over it.

Cleaning Instructions:

- Wipe surface of lamp shade with a soft, damp sponge or cloth.
- Do not use any abrasive cleaning tools such as steel wool, scouring sponges or stiff brushes.
- Never use strong cleaning agents such as white spirit, turpentine, household glass cleaner or cellulose thinners.
- Only wipe the inside of the shade with a soft, damp cloth or feather duster..

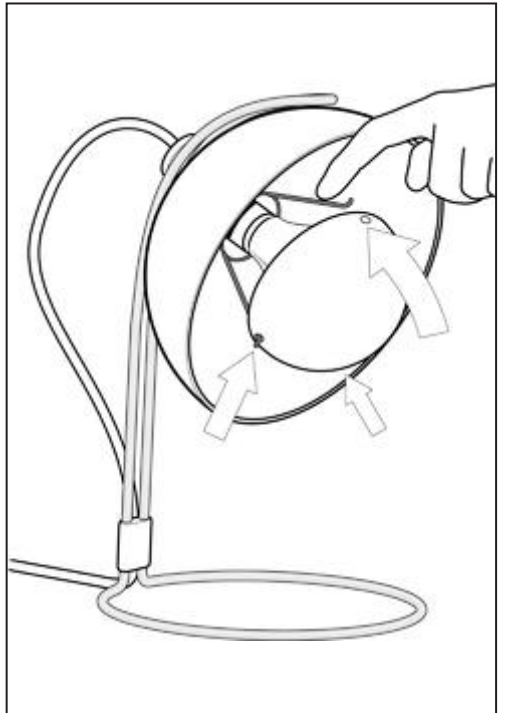
01.

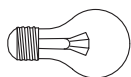
To Adjust the angle of the light, grip the top of the shade while supporting the base with the other hand. Slide the top of the shade up or down to set the desired angle. It is best to set the angle before turning the lamp on as the shade gets hot when the lamp is in use for longer periods of time.



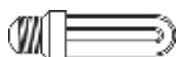
02.

Install a lightbulb in the lamp and mount the undershade onto the three pronged arm inside the shade as shown in the diagram. Switch on the power supply and enjoy your new lamp.





Maximum 40 W.
Tungsten E27 bulb.



Maximum 7 W.
Low Energy E27
bulb.

CE □ F IP20

&tradition[®]
COPENHAGEN

KONGEVEJEN 2. DK-3480 FREDENSBORG.

T. +45 39200233 F.+45 39200256

INFO@ANDTRADITION.DK WWW.ANDTRADITION.COM